



Take Reduction Fact Sheet for Atlantic Fisheries



Q: What are take reduction teams and plans?

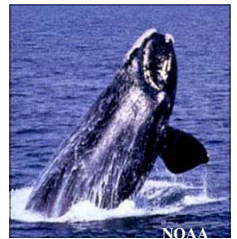
A: Take Reduction Teams (TRTs) are groups of stakeholders, including commercial fishermen, who meet to assist in the recovery or to prevent the depletion of marine mammals that are incidentally seriously injured or killed in Category I or II fisheries. These teams develop strategies and/or Take Reduction Plans (TRPs) to meet these objectives. These may include regulations and are often accompanied by non-regulatory conservation measures, such as outreach and gear research projects.

Q: What take reduction plan requirements do I have to abide by?

A: There are five TRTs and four TRPs that may apply to fishermen on the Atlantic coast:

Atlantic Large Whale Take Reduction Team/Plan (ALWTRP)

ALWTRP regulations are intended to reduce the serious injury and mortality of the right, humpback and fin whales in commercial gillnet and trap/pot fisheries from Maine through Florida. The ALWTRP was recently modified to regulate additional trap/pot and gillnet fisheries, establish new gear modification and marking requirements (e.g. sinking groundline, weak links, gillnet anchoring, buoy line marking), and implement a number of other regulatory changes. **Most modifications are already effective, except for the broad-based sinking groundline requirement for trap/pot fisheries which is scheduled to become effective on April 5, 2009.** Participants in these fisheries should have received a permit holder letter summarizing these modifications. For more information, contact the ALWTRP Coordinator, Diane Borggaard, at (978) 281-9300, ext. 6503 or visit the ALWTRP web page at <http://www.nero.noaa.gov/whaletrp/>. If you have questions about specific gear modifications, please contact the industry liaison for your area: John Higgins (207-677-2316) in New England or Glenn Salvador (757-414-0128) in the Mid-Atlantic.



Harbor Porpoise Take Reduction Team/Plan (HPTRP)

HPTRP regulations are intended to reduce the serious injury and mortality of the Gulf of Maine/Bay of Fundy stock of harbor porpoises in Northeast sink gillnet and Mid-Atlantic gillnet fisheries from Maine through North Carolina. NOAA Fisheries Service reconvened the Harbor Porpoise Take Reduction Team (HPTRT) in December 2007 to address recent increases in harbor porpoise mortalities in the New England and Mid-Atlantic regions. The HPTRT recommended a number of further modifications to the HPTRP, which are intended to lower harbor porpoise interactions with these fisheries to acceptable levels. NOAA Fisheries Service intends to propose modifications to the HPTRP in early 2009. For more information, contact the HPTRP Coordinator, Amanda Johnson at (978) 281-9300, ext. 6513 or visit the HPTRP web page at www.nero.noaa.gov/prot_res/porptrp/. You may also contact the industry liaison for your area (listed above under ALWTRP) with specific questions about gear requirements.

Atlantic Trawl Gear Take Reduction Team (ATGTRT)

NOAA Fisheries Service convened a take reduction team in 2006 to develop consensus recommendations for a take reduction strategy to reduce the serious injury and mortality of pilot whales, common dolphins, & Atlantic white-sided dolphins from interactions with trawl fisheries. The team has met twice & is developing research & education strategies as a part of its efforts to reduce interactions between trawl fisheries & marine mammals. For more information, contact the ATGTRT Coordinator, Mark Minton at (978) 281-9300, ext. 6534 or visit the ATGTRT web page at www.nero.noaa.gov/prot_res/atgtrp/.



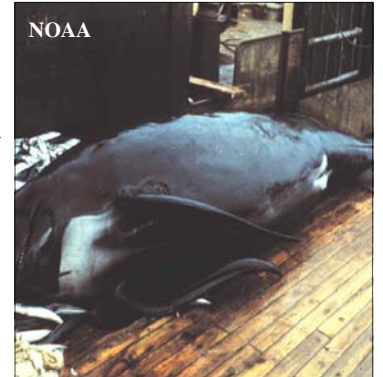
Bottlenose Dolphin Take Reduction Team/Plan (BDTRP)

NOAA Fisheries Service convened a take reduction team in 2001 to address the serious injury & mortality of the Western North Atlantic coastal bottlenose dolphin stock incidental to nine Category I and II fisheries from New Jersey through the east coast of Florida. The final BDTRP was published on April 26, 2006 (71 FR 24776), with an effective date of May 26, 2006. On August 22, 2008, a proposed rule was published (73 FR 49634) to amend the BDTRP by continuing nighttime medium mesh fishing

restrictions in North Carolina state waters for an additional three years. For more information, contact the BDTRP Coordinator, Stacey Horstman at (727) 824-5312; contact the Southeast Region Fishery Liaison, David Hilton (252) 928-9092, or visit the BDTRP web page at: www.nmfs.noaa.gov/pr/interactions/trt/bdtrp.htm .

Pelagic Longline Take Reduction Team/Plan (PLTRP)

In 2006, NMFS convened a take reduction team (PLTRT) to address the serious injury and mortality of short-finned pilot whales, long-finned pilot whales, and Risso’s dolphins in the mid-Atlantic portion of the Atlantic pelagic longline fishery. The PLTRT provided consensus recommendations in a Draft Take Reduction Plan (PLTRP) to NMFS. The Draft PLTRP included recommendations for management strategies and research priorities and formed the basis of a proposed rule. The proposed rule published in the *Federal Register* on June 24, 2008 (73 FR 35623) and included regulatory and non-regulatory actions to reduce serious injuries and mortalities of pilot whales and Risso’s dolphins incidental to the commercial Atlantic pelagic longline fishery to insignificant levels. For more information, contact the PLTRT Coordinator, Erin Fougères at (727) 824-5312 or Kristy Long at (301)713-2322, or visit the PLTRP web page at: www.nmfs.noaa.gov/pr/interactions/trt/pl-trt.htm .



Q: What Atlantic fisheries are impacted by Take Reduction Teams/Plans?

Atlantic Fisheries Affected by Take Reduction Teams/Plans	
<p>Atlantic Large Whale Take Reduction Plan Northeast sink gillnet Mid-Atlantic gillnet Southeast Atlantic gillnet Southeastern U.S. Atlantic shark gillnet Northeast/Mid-Atlantic American lobster trap/pot Northeast anchored float gillnet Northeast drift gillnet Atlantic blue crab trap/pot Atlantic mixed species trap/pot</p> <p>Atlantic Trawl Gear Take Reduction Team Mid-Atlantic mid-water trawl (including pair trawl) Mid-Atlantic bottom trawl Northeast mid-water trawl (including pair trawl) Northeast bottom trawl</p>	<p>Bottlenose Dolphin Take Reduction Plan Atlantic blue crab trap/pot Mid-Atlantic gillnet North Carolina inshore gillnet Southeast Atlantic gillnet Southeastern U.S. Atlantic shark gillnet Mid-Atlantic haul/beach seine North Carolina long haul seine North Carolina roe mullet stop net Virginia pound net</p> <p>Harbor Porpoise Take Reduction Plan Northeast sink gillnet Mid-Atlantic gillnet</p> <p>Pelagic Longline Take Reduction Plan Atlantic Ocean, Caribbean and Gulf of Mexico large pelagics longline</p>

For more information on marine mammal & fisheries interactions visit NOAA Fisheries Service’s website
<http://www.nmfs.noaa.gov/pr/interactions/>